



Pittsburgh Thermal Plant Tours

Cliff Blashford, Brian Goss, Mark Johnson, Bard Rupp

Clearway Energy, Inc.

June 27, 2019

IDEA 2019 – Pittsburgh Thermal Plant Tours

Clearway Energy – Uptown & Campus (“Duquesne University”) Plants



- North Shore System (1969)
- A: Uptown Plant (2018)
- B: Campus (“Duquesne University”) Plant (2019)

IDEA 2019 – Pittsburgh Thermal Plant Tours

Energy Center Pittsburgh LLC – Uptown System



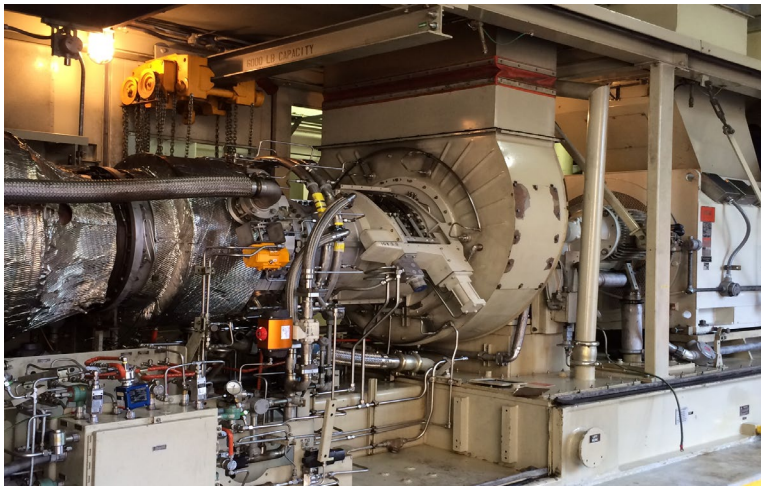
IDEA 2019 – Pittsburgh Thermal Plant Tours

Energy Center Pittsburgh LLC – Uptown System

Plant Attribute	Data
Year Established	2018
Services Provided	Steam, CW, Backup Power (to UPMC Mercy)
No. of Customers; Buildings	1; 4 (...thus far!)
Heating Capacity (Installed)	150,000 lbs/hr (Natural Gas; 3 x 50,000 lbs/hr.)
Cooling Capacity (Installed)	8,250T (Electric; 3 x 2,750T)
Electrical Capacity (if applicable)	7.5MW (Emergency Backup to Plant & UPMC Mercy Hospital only)
Distribution	~ 0.5 mile direct buried pipe (Steam, condensate, CWS, CWR)
Miscellaneous	Rates regulated by PA PUC. Strategically located to meet DE system development in Uptown district. Planned interconnection to newly acquired Duquesne University assets for redundancy, resiliency, and operational synergies.

IDEA 2019 – Pittsburgh Thermal Plant Tours

ECP Uptown Campus LLC (formerly “Duquesne University Energy Center”)



IDEA 2019 – Pittsburgh Thermal Plant Tours

ECP Uptown Campus LLC (formerly “Duquesne University Energy Center”)

Plant Attribute	Data
Year Established	1997 (acquired by CWEN in 2019)
Services Provided	Steam, CW, Electricity (to Duq Univ Campus)
No. of Customers / Buildings	50 acre campus; 4MM square feet of building
Heating Capacity (Installed)	181,000 lb/hour (3 x 52kp/h NG + HRSG)
Cooling Capacity (Installed)	6600T (Electric; Steam Absorption)
Electrical Capacity (if applicable)	5.6MW Gas Turbine (Solar)
Distribution	Owned by Duq Univ; Maintained by Clearway
Miscellaneous	Unregulated subsidiary of Clearway Energy 40 Year Energy Service Agreement 6000T Ice Storage Added in 2007 Planned interconnection to Uptown distribution assets for redundancy, resiliency, and operational synergies.

IDEA 2019 – Pittsburgh Thermal Plant Tours
Thanks for your interest in Clearway Energy!



Enjoy the Tours!

Cliff Blashford, Brian Goss, Mark Johnson, Bard Rupp
Clearway Energy, Inc.
6/27/2019