



Creating Positive Community Impact through MetroHealth's Campus Transformation Plan



The MetroHealth System Cuyahoga County and NE Ohio

- Public safety net hospital, 180+ years
- 1 rehab and 2 community hospitals
- 20 Health Centers with an additional 40 sites offering MetroHealth care
- 1.4 million patient visits annually
- Over 300,000 patients, 75% of whom are uninsured or on Medicaid or Medicare
- 7,700 employees, 10th largest employer in 15 county NE Ohio region





MetroHealth Medical Center - Cleveland, OH



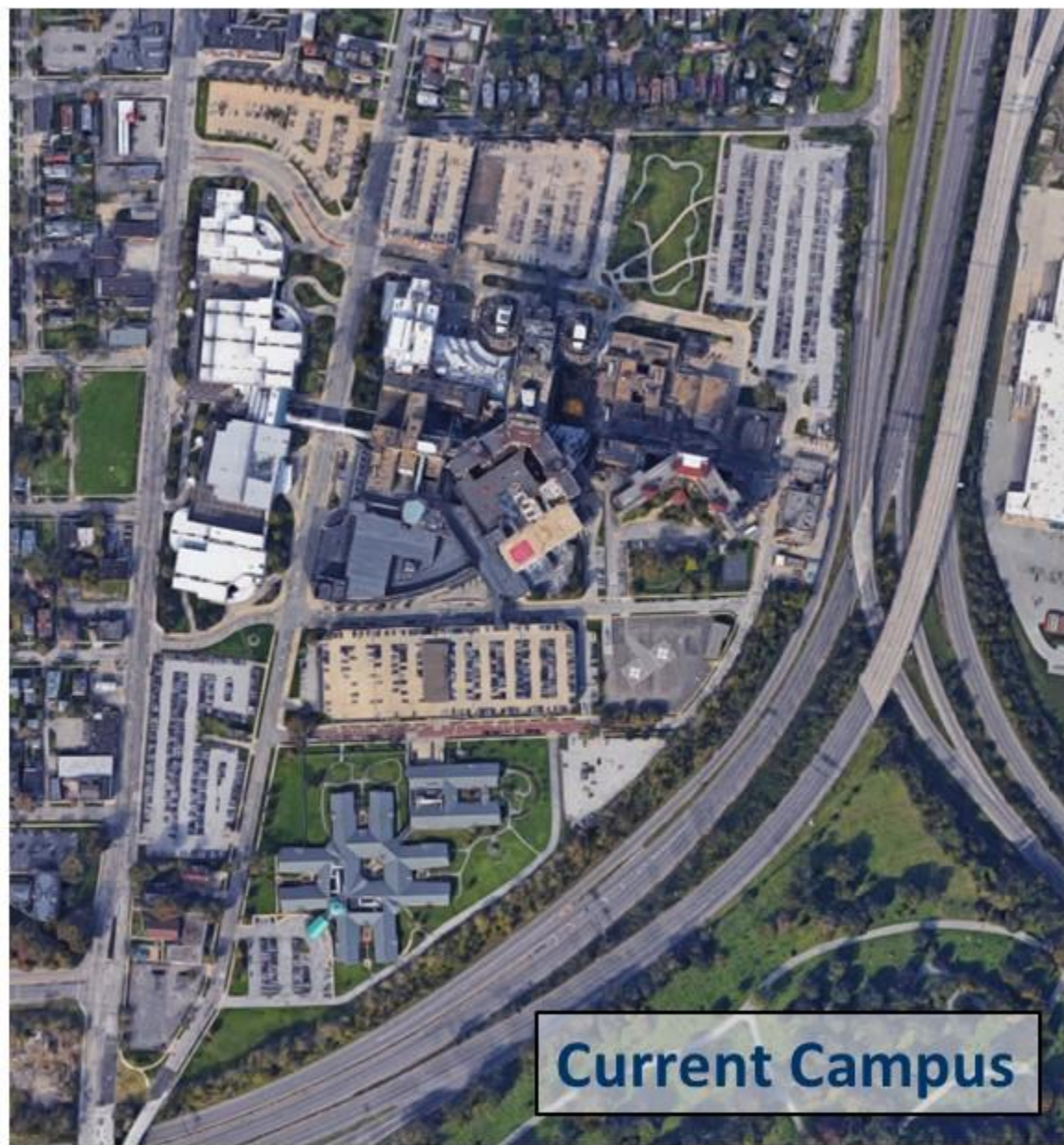
MetroHealth

CHANGE IS
HEALTHY



100 year old water tower currently
in use at MetroHealth Medical
Center central utility plant

- 2014 Polar Vortex – loss of 200 beds
- Facilities Assessment - \$1B to rehab
- *Campus Transformation Plan*: new hospital, central utility plant, parking garage, View Road, community park
- Improved finances 2013-2018 enabled bond funding for nearly \$1B for design and construction
- Self-funding allows for flexibility to pursue innovative design and paths to get there



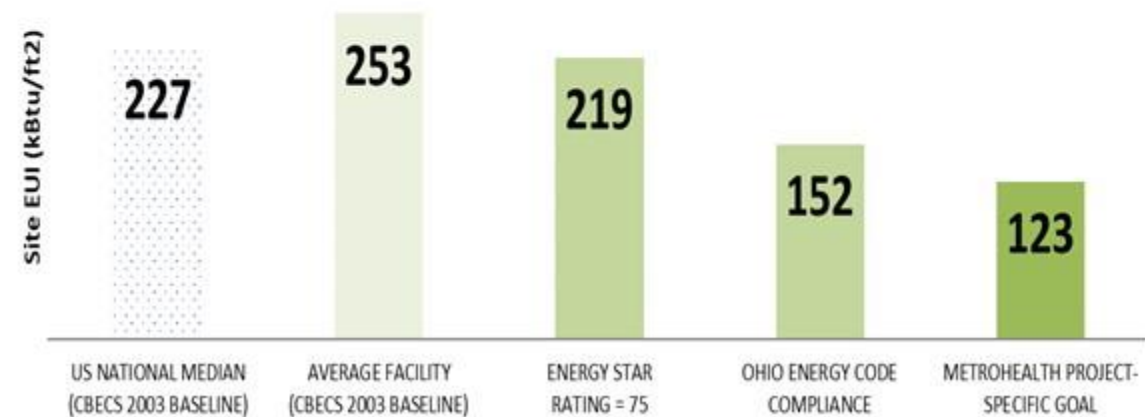
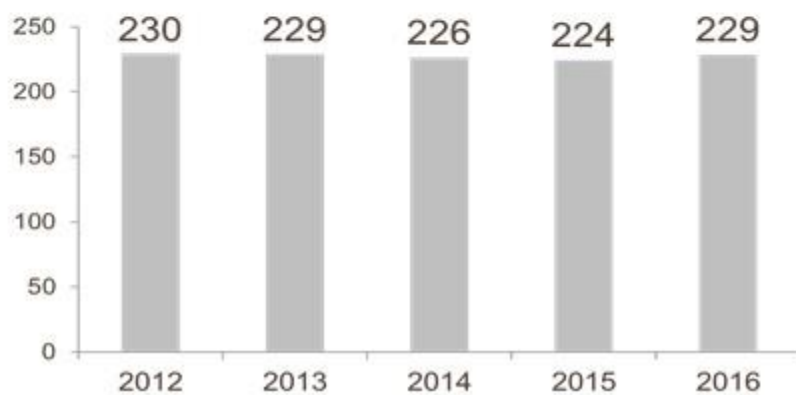
Current Campus

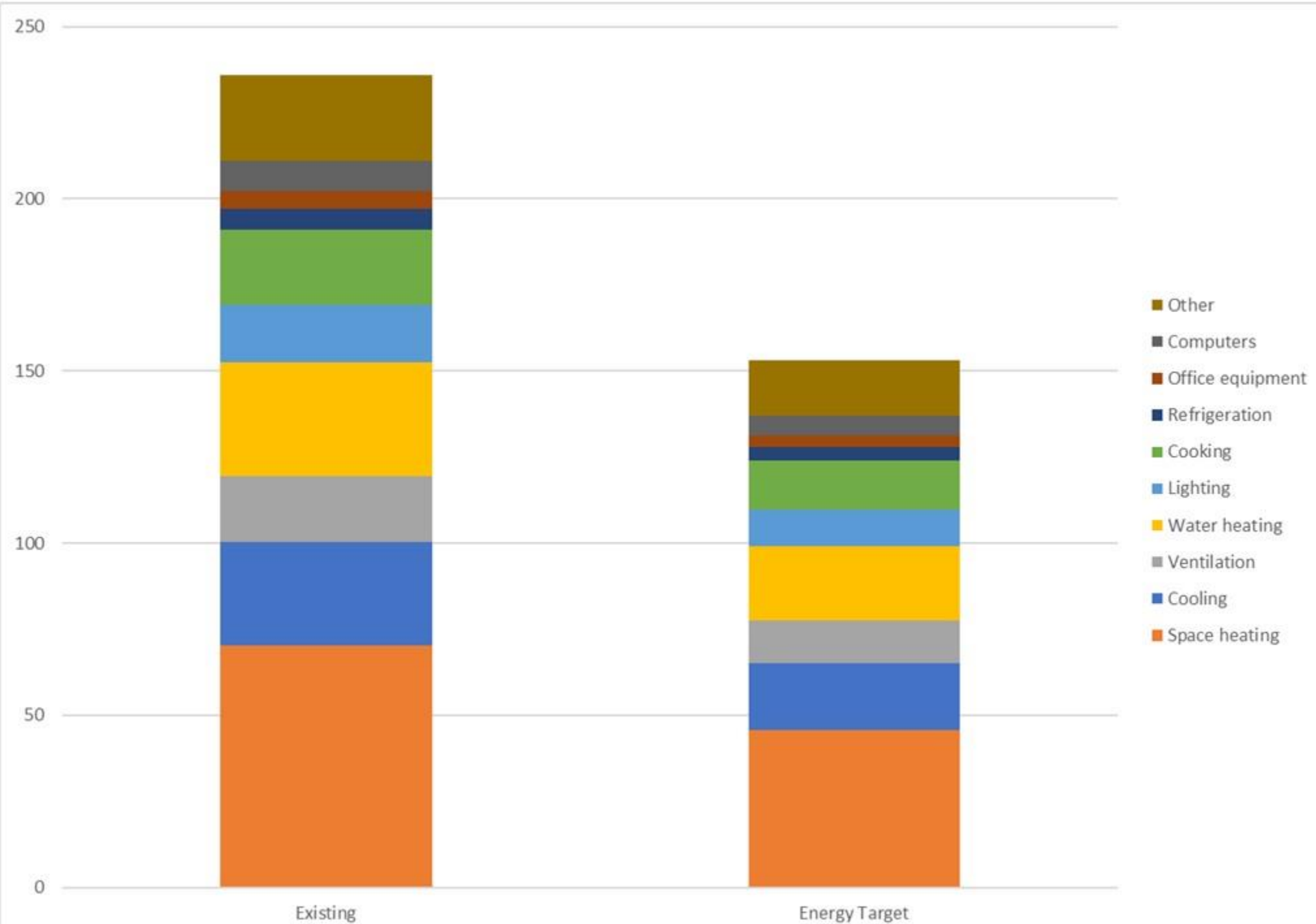


Future Campus





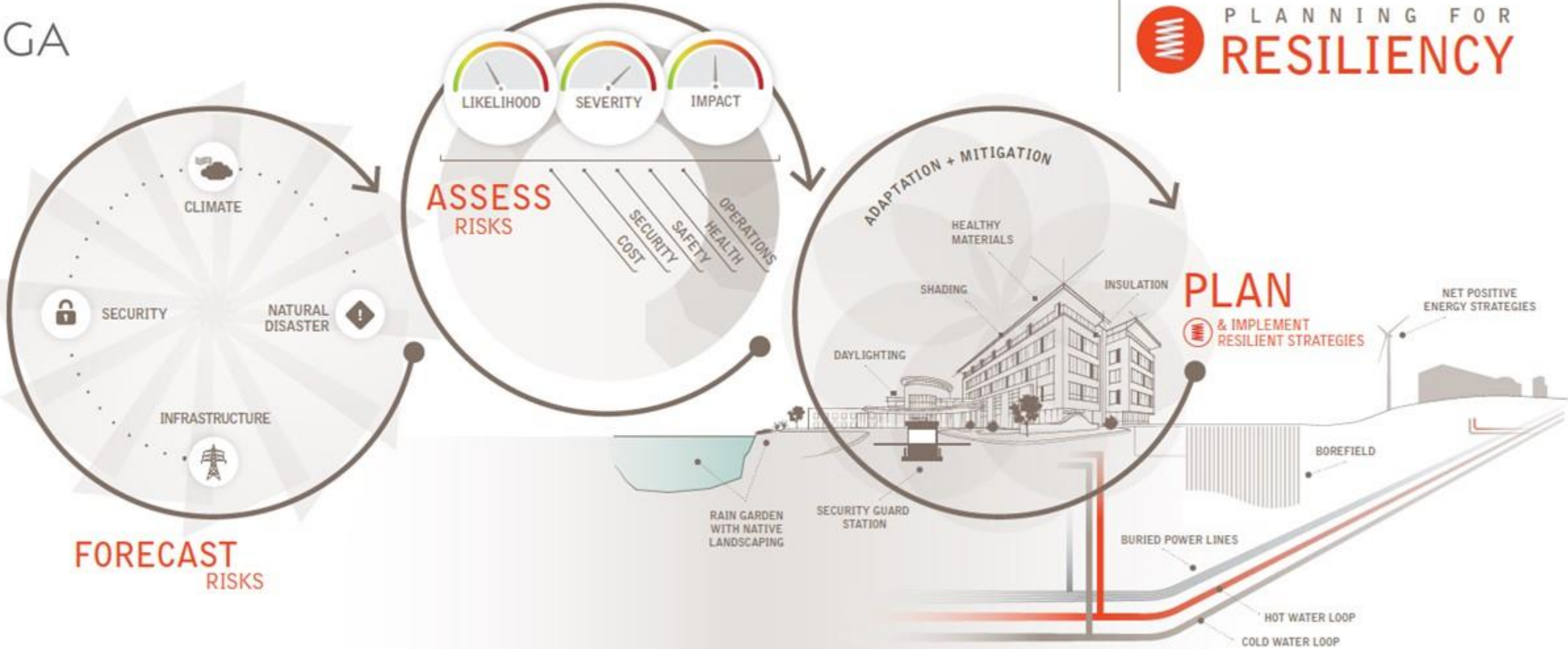




HGA





PLANNING FOR
RESILIENCY



Resilience Assessment Tool

Hazard Vulnerability Assessment

RISK		LEVEL OF CONCERN	SEVERITY = (MAGNITUDE - MITIGATION)						
			HUMAN IMPACT	PHYSICAL ASSETS IMPACT	BUSINESS IMPACT	PREPARED-NESS	INTERNAL RESPONSE	EXTERNAL RESPONSE	RISK
			Likelihood & owner concern	Possibility of death or injury	Physical losses and damages	Interruption of services	Bricks & Mortar - Design Mitigation	Staff emergency planning/response	Other agencies
		1 = Low 2 = Moderate 3 = High	1 = Low 2 = Moderate 3 = High	1 = Low 2 = Moderate 3 = High	1 = Low 2 = Moderate 3 = High	3 = Low 2 = Moderate 1 = High	3 = Low 2 = Moderate 1 = High	3 = Low 2 = Moderate 1 = High	0 - 100%
 CLIMATE	Extreme/Intense Precipitation Events	High	Low	High	Moderate	Low	High	Moderate	67%
	Temperature Extremes	Moderate	Low	Moderate	Low	Moderate	High	High	30%
	Drought	Low	Low	Low	Low	Low	High	Low	19%
	Dew Point Changes	Moderate	Low	Moderate	Low	Moderate	High	High	30%
	Changes in Precipitation	Low	Low	Low	Low	Low	High	Moderate	17%
 NATURAL DISASTER	Extreme Wind (straight line, hurricane, tornado)	Low	High	High	High	Moderate	High	High	24%
	Excessive Snow Load	Moderate	Low	Moderate	Moderate	Low	High	Low	44%
	Excessive Ice	Moderate	Moderate	Moderate	Moderate	Moderate	Moderate	Low	48%
	Groundwater Infiltration	High	Low	High	Moderate	High	High	High	50%
	Hail	Low	Low	Low	Low	Moderate	High	High	13%

issue #1:

maintain power

Energy Supply

Electric

Natural
Gas

Utility
Distribution

Emergency
Power
Capacity &
Distribution

UPS

Demand
Response
Mode

Backup Fuel
Storage

Centralized Systems

Redundancy

Backup

Sustain operation during utility outages

We have power.

How about water?



Water Systems

Municipal Supply

Water Storage
for 96 hours

Stormwater

Temporary
Connection

Well Water
as backup

Potable
Water

RO Water

Chilled
Water
Thermal
Storage

Site design

Internal
Flood

Centralized Systems

Redundancy

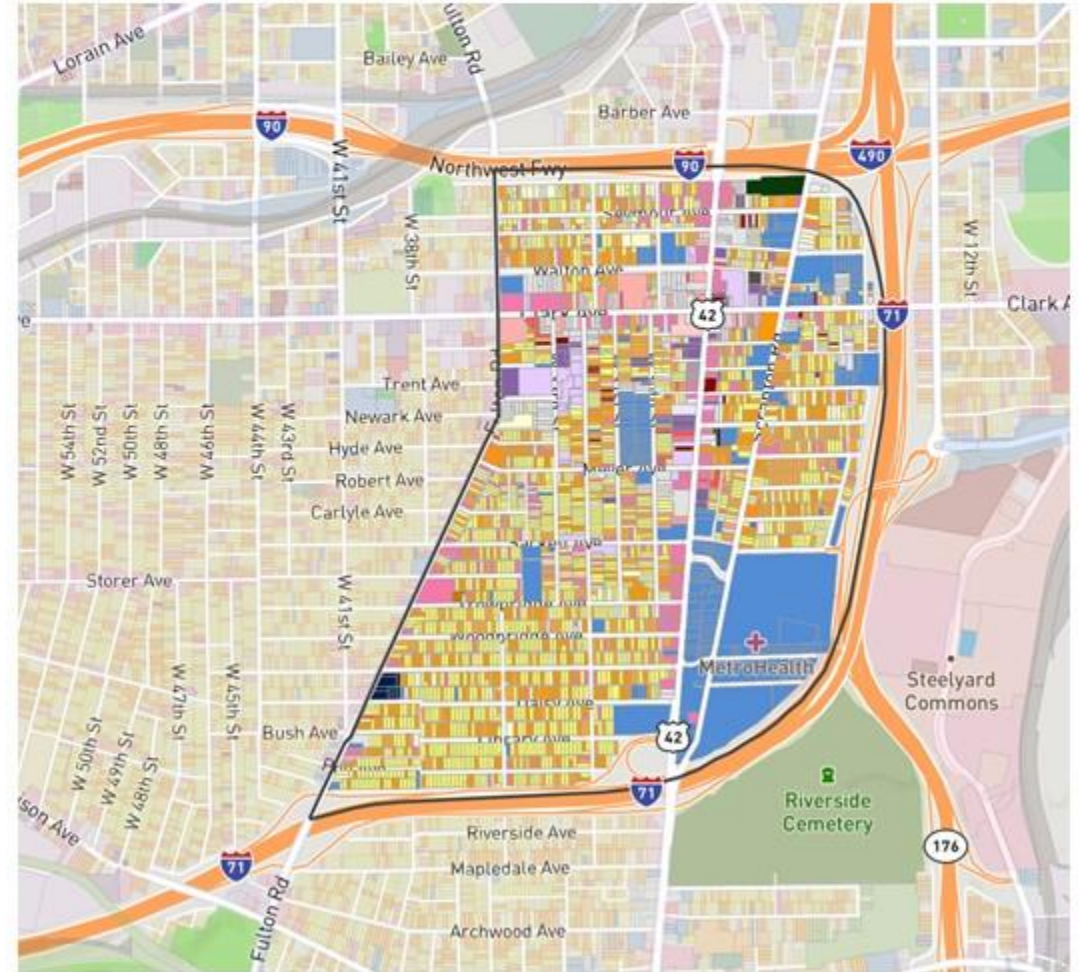
Backup

Reliable Water to support the Patient Environment

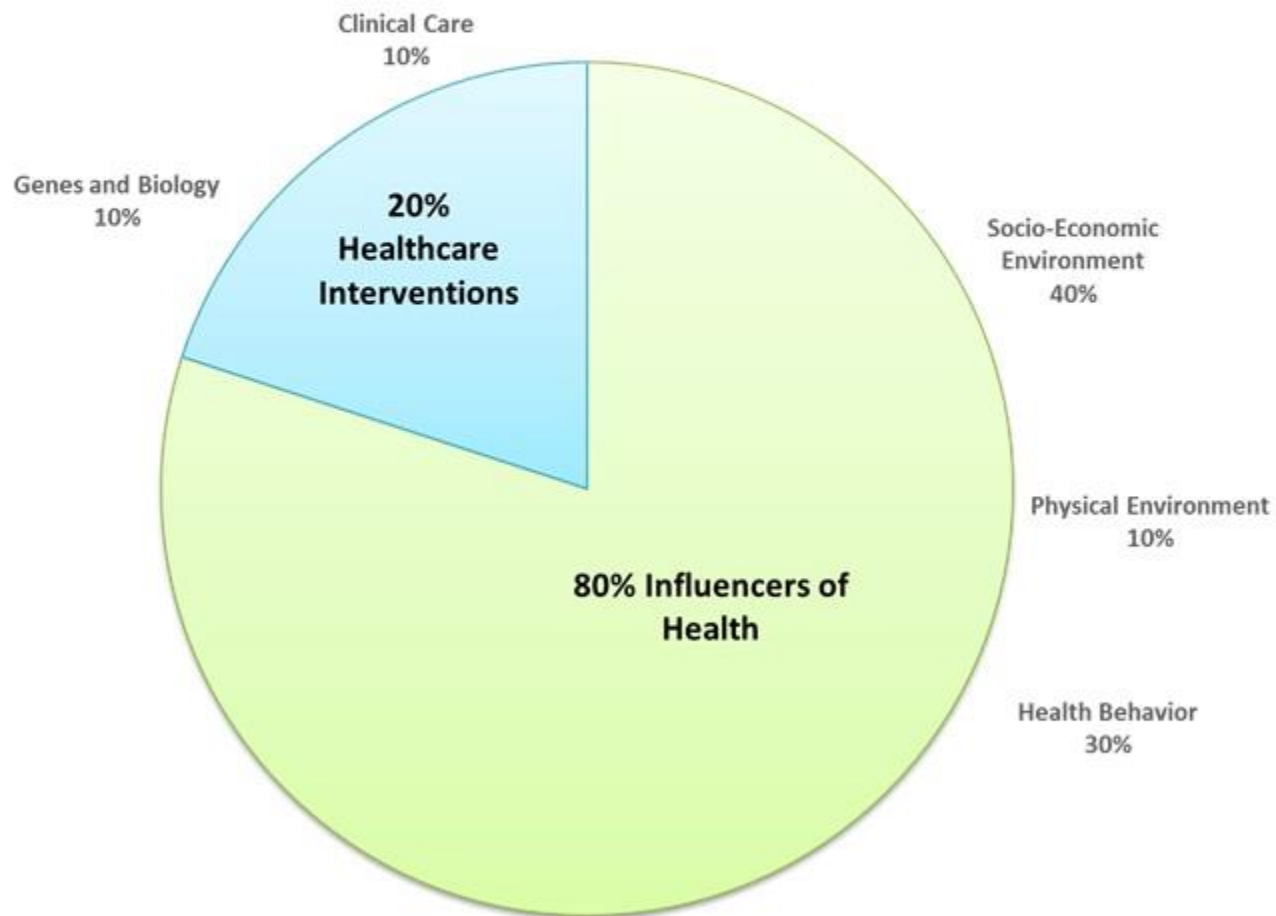
From Campus Transformation to Neighborhood Transformation

- Zip code = Health (Social determinants of health)
- Clark-Fulton neighborhood – high poverty, low education level, > 50% minority, chronic illnesses
- Elevate to become healthier, more equitable, economically and socially resilient, environmentally sustainable
- Community engagement
- Transparency - public reporting on progress
- Systems thinking – generational sustainability

= EcoDistricts Protocol



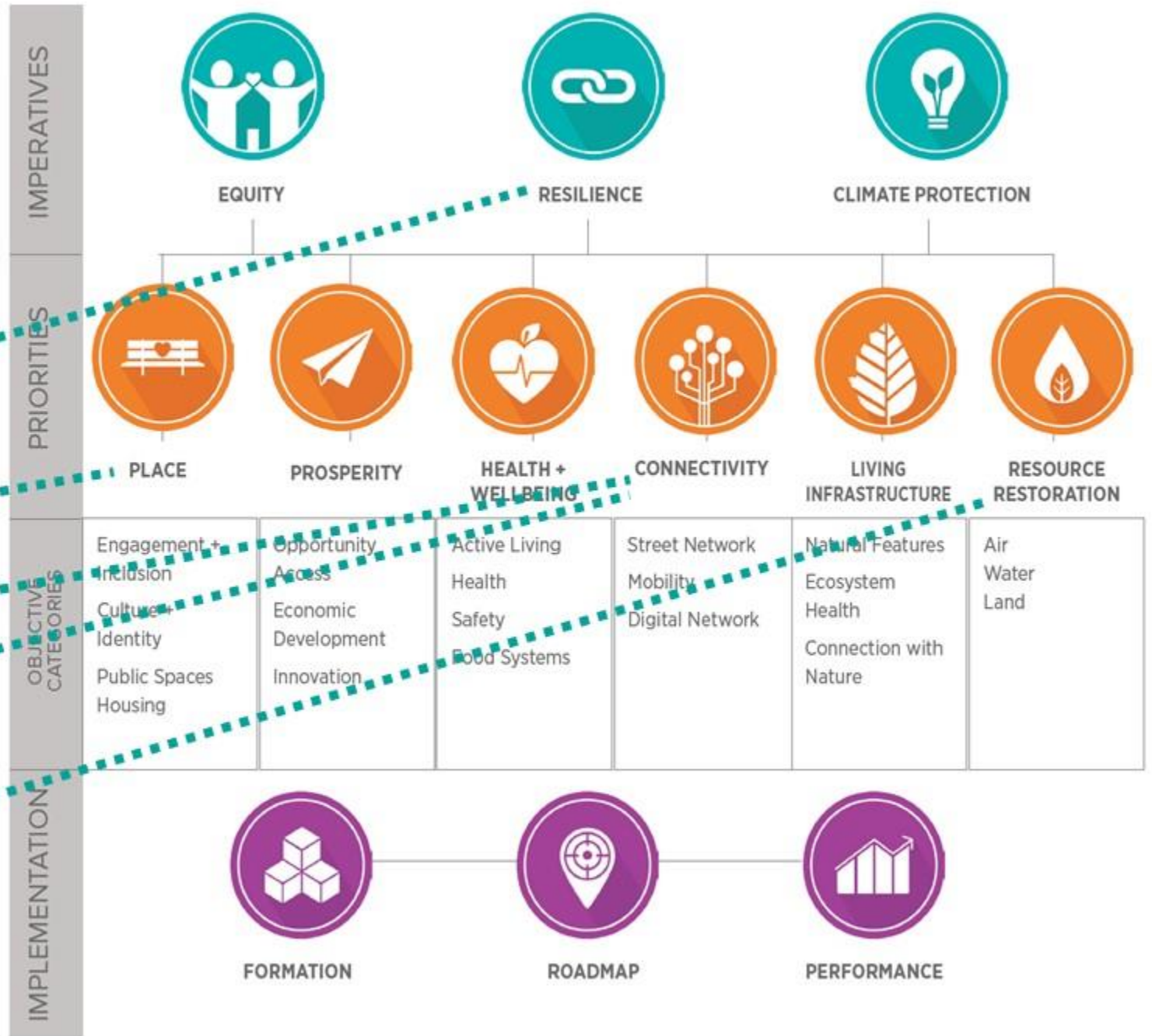
Social Determinants of Health



<https://ecodistricts.org/protocol/>



- District Energy
- Affordable Housing
- Digital Connectivity
- Transportation
- Stormwater Management



DRAFT EcoDistrict Governance for Collective Impact

Core Team

Co-chairs: Councilwoman, Community Development Corporation, Hospital (anchor institution)
+ City, Philanthropy, Elected Residents

Collaborative

Core Team + business council, faith community institutions, community development corporation, housing organization, public transit authority, metro area park non-profit, public library....

Community Ambassadors

Residents, community leaders, advocates



Transformation for Resilience, Health, Community, Equity, Sustainability



